

Instructions for collecting a vaginal swab

Collect the sample using the PCR set.



PCR set (yellow transport tube)

A – conventional woven tampon

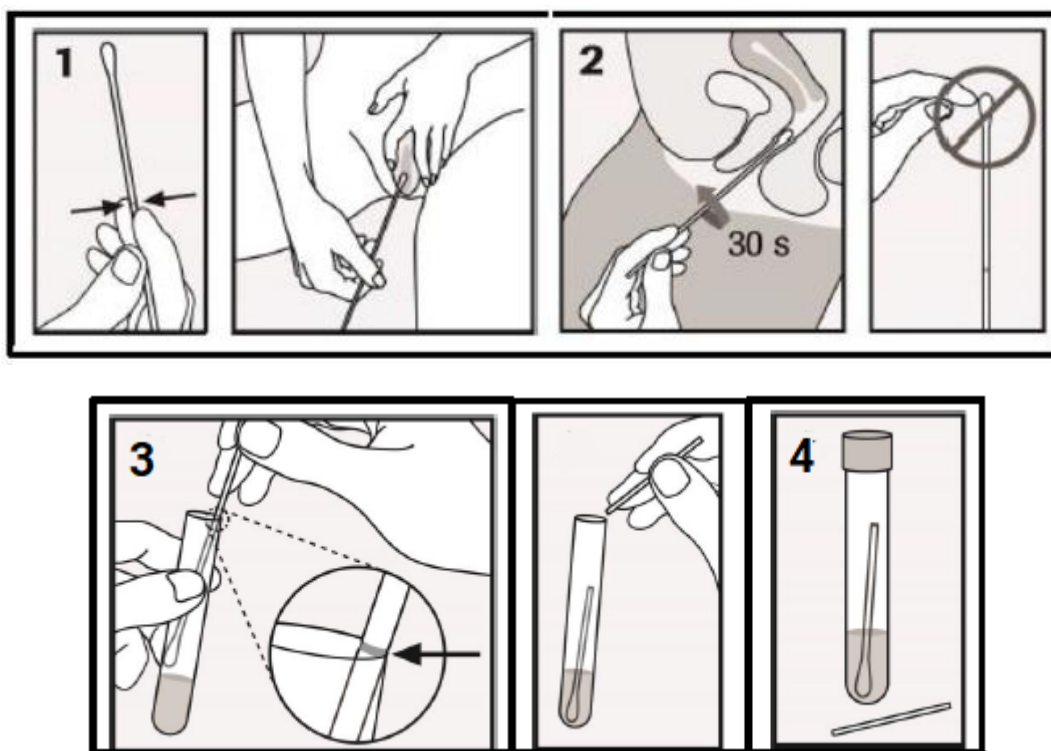
Do not moisten the tampon in the liquid medium before use, as the medium contains irritating substances.

Do not use vaginal gels, moisturisers, or suppositories before the sample collection.

Prevent blood from the mucous membranes contaminating the sample when performing the sample collection.

- A. Put on protective gloves. Take the conventional woven tampon (tampon A) out of the set and slide it into your vagina approximately 5 cm deep (pic. 1). Gently rotate the collection tampon for 20–30 seconds (pic. 2), rubbing it against the vaginal wall. Take the tampon out carefully to avoid contact between the tampon and any surface until the tampon is inserted into the transport tube.
- B. Open the transport tube with the yellow cap (**do not pour the medium out of the tube!!!**) and insert the collection tampon into the tube so that the black line on the tampon stick touches the edge of the tube opening (pic. 3.). In this position, the end of the tampon is located right above the level of the liquid medium in the tube.
- C. Bend and break the collection tampon stick against the edge of the tube opening (pic. 4). Discard the top part of the stick of the collection tampon in the separated waste.
- D. Close the collection tube tightly.

Hand in the firmly closed tube with the yellow cap to the medical staff at the collection point. Store at 5–25°C.



Warning:

- When using the collection set, avoid direct contact between the medium (fluid) in the tube and any substances such as acids and bases. Combining these substances may result in the formation of harmful gases.
- Follow the collection instructions carefully.
- Avoid contact between the medium (fluid) and the skin, eyes, or mucous membranes. If contact occurs, wash with a large amount of water.
- Do not use the set after the expiration date.
- When closing the tube containing the medium (yellow cap), make sure that the cap is closed tightly.
- Do not moisten the tampon in the medium (fluid) before you perform the sample collection.
- When handling the sample and the collection set, use disposable protective gloves and thoroughly wash your hands after handling.