

## Instructions for collecting a urine sample

Collect the sample using the PCR set + a sterile container.



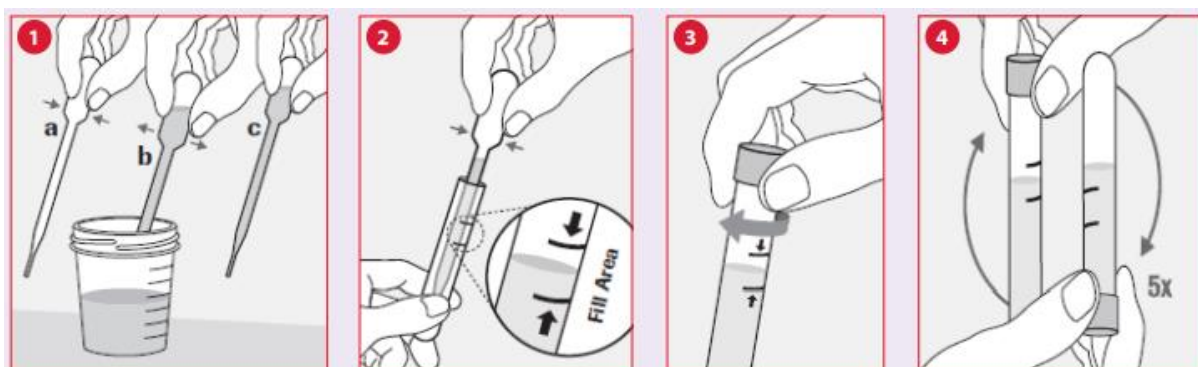
Urine – PCR set (transport tube, yellow)



Urine – container 30 ml (red)

- A. Put on protective gloves. Collect the first part of the urine stream in the sterile container which does not contain any preservatives (container with the red lid). It is advisable to collect the first morning urine or urine from any time of the day provided that you do not urinate at least 2 hours before the collection. Collect the first urine stream in an amount of 15–20 ml in the sterile container with a wide neck (container with the red lid).
- B. Immediately after voiding, transfer the urine from the sterile container into the tube from the set using the pipette provided (transport tube with the yellow cap). **Do not pour the medium out of the tube!**
- C. Dispense a volume of urine so that the sample level in the transport tube falls between the two marked lines (refer to Figure 2). Then close the tube tightly with the yellow cap (Fig. 3), then mix the contents - it is necessary to mix the urine with the medium in the tube (Fig. 4).
- D. **Do not pour out the remaining urine of the container (container with red cap)!!!** Tightly close the container with the red lid.

**Turn in the yellow capped tube and the red capped container to the health personnel at the collection site. Store in the refrigerator at temperature between 5 –8 °C.**



**Warning:**

- When using the collection set, avoid direct contact between the medium (fluid) in the tube and any substances such as acids and bases. Combining these substances may result in the formation of harmful gases.
- Follow the collection instructions carefully.
- Avoid contact between the medium (fluid) and the skin, eyes, or mucous membranes. If contact occurs, wash with a large amount of water.
- Do not use the set after the expiration date.
- When closing the tube containing the medium (yellow cap), make sure that the cap is closed tightly.
- When handling the sample and the collection set, use disposable protective gloves and thoroughly wash your hands after handling.